

## How to Import Certificates for IDWedgePro WCF Https using IE11 or Chrome

These two certificates below are found in the deploy folder: C:\TokenWorks\IDWedgePro

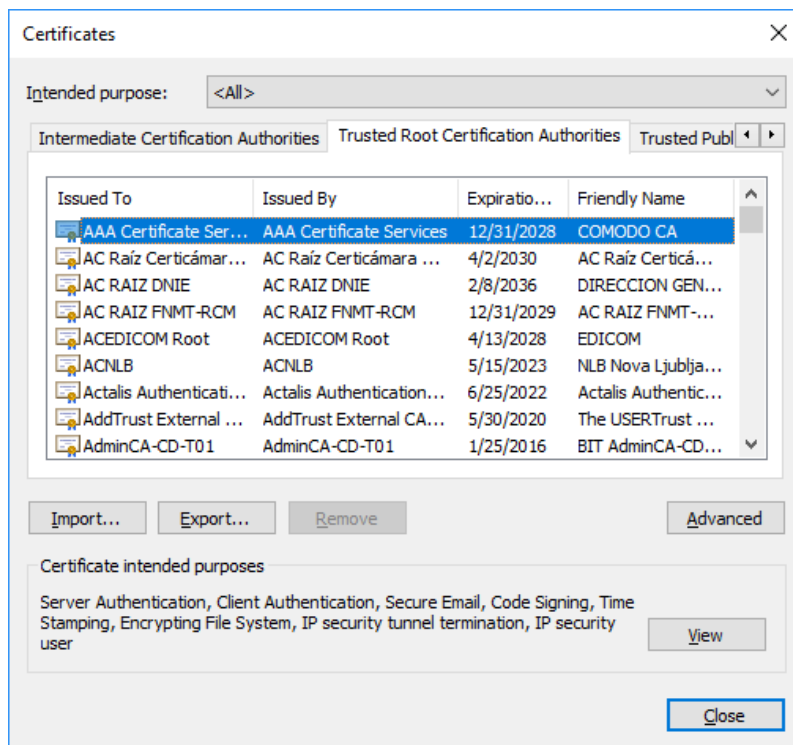
### CA.pem and server.pfx

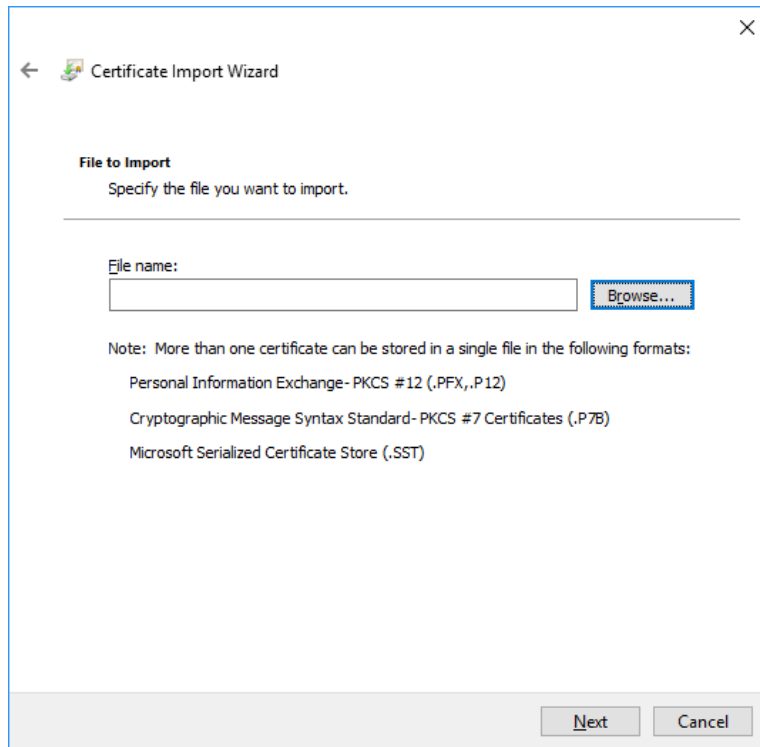
In IE11/Chrom import the CA.pem into the Trusted Root Authorities and install server.pfx into the personal store

### CA.pem into the Trusted Root Authorities

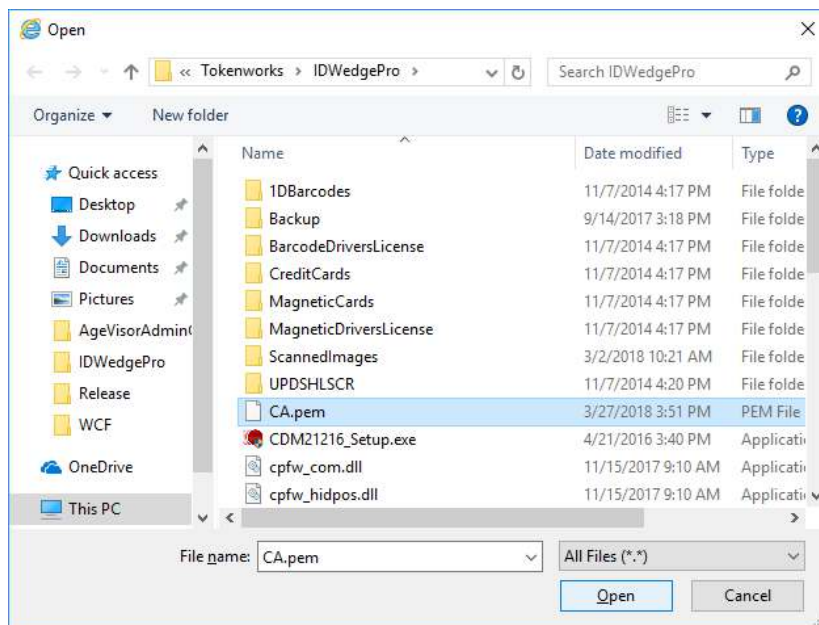
Internet Options->Content->Certificates->Trusted Root Authorities

Hit the import button:

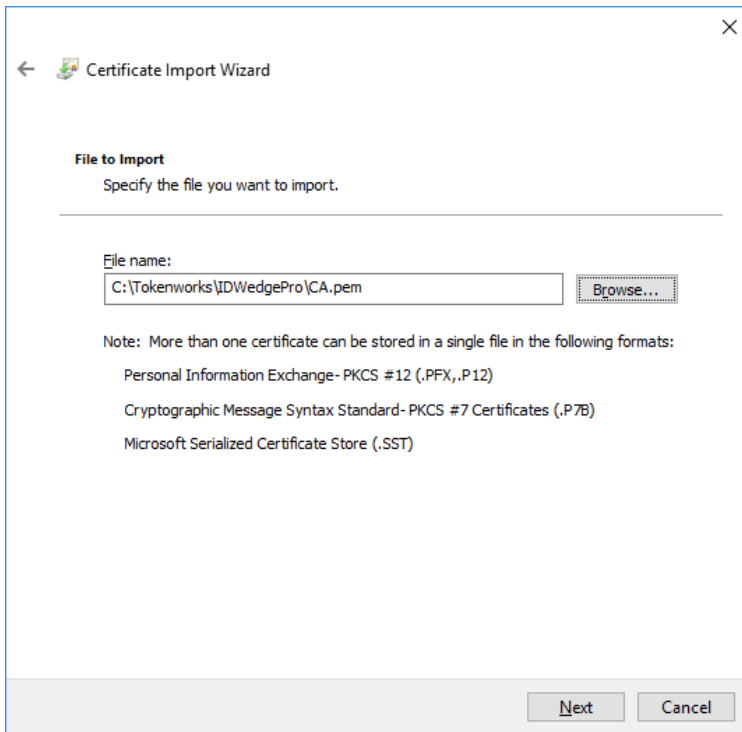




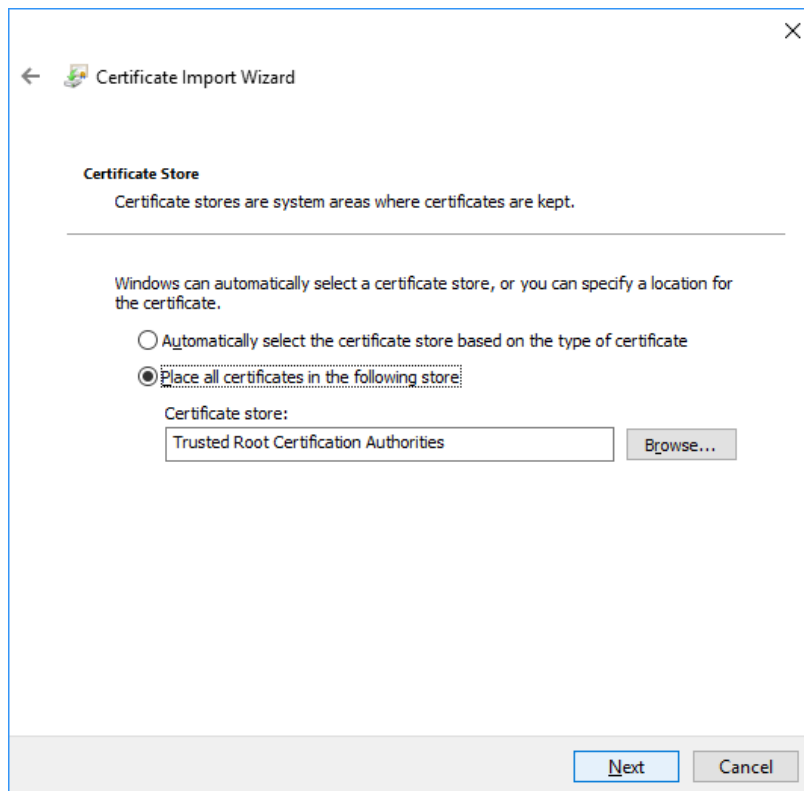
Hit browse and find CA.pem in IDWedgePro folder:



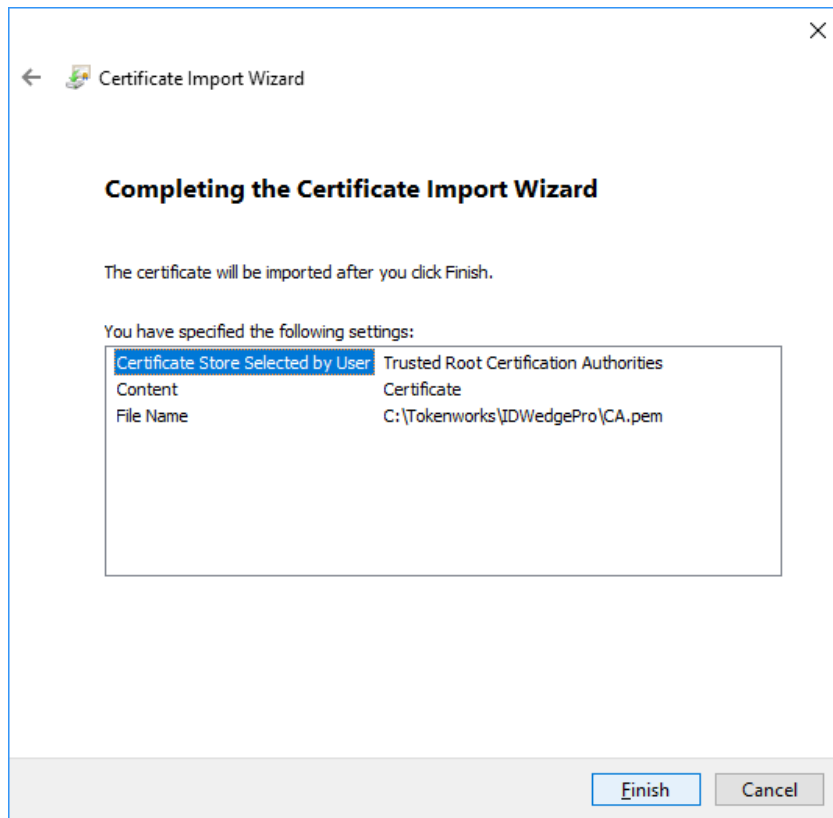
CA.pem is found in C:\TokenWorks\IDWedgePro



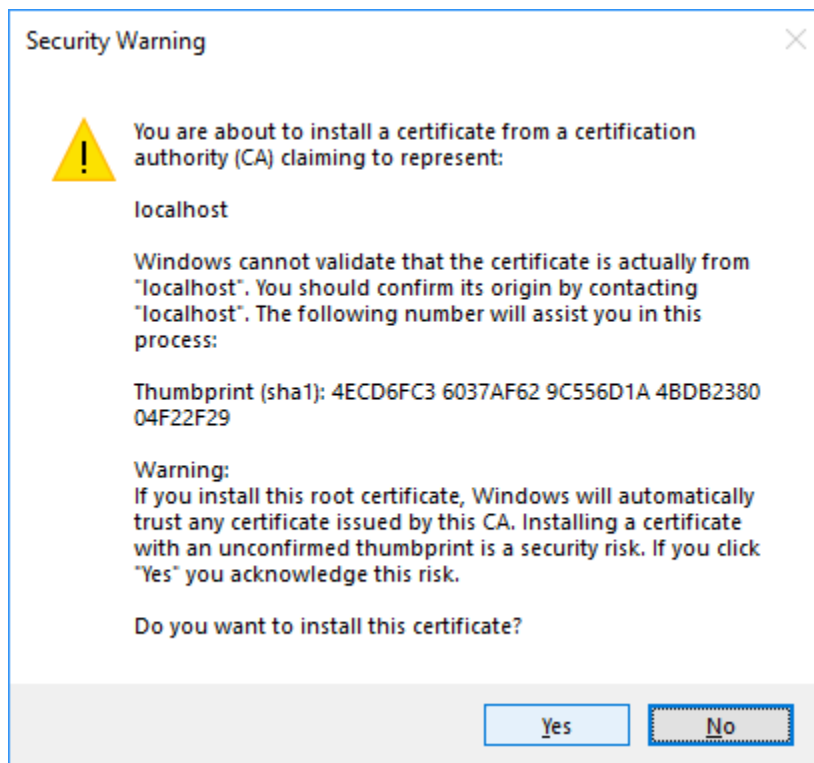
Click Next



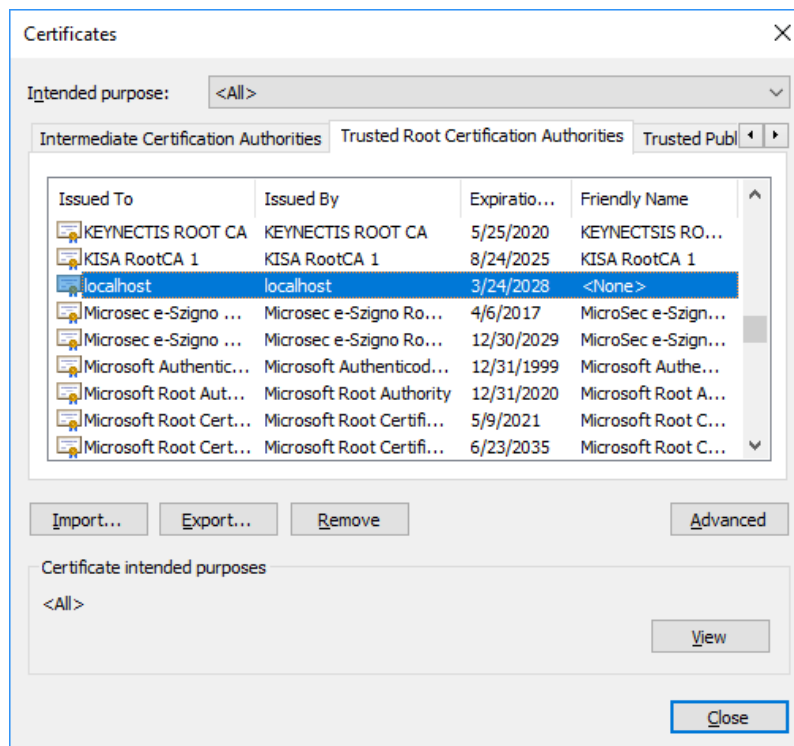
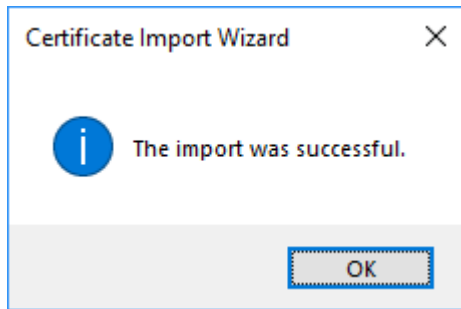
Install CA.pem into Trusted Root Certification Authorities



Click Finish



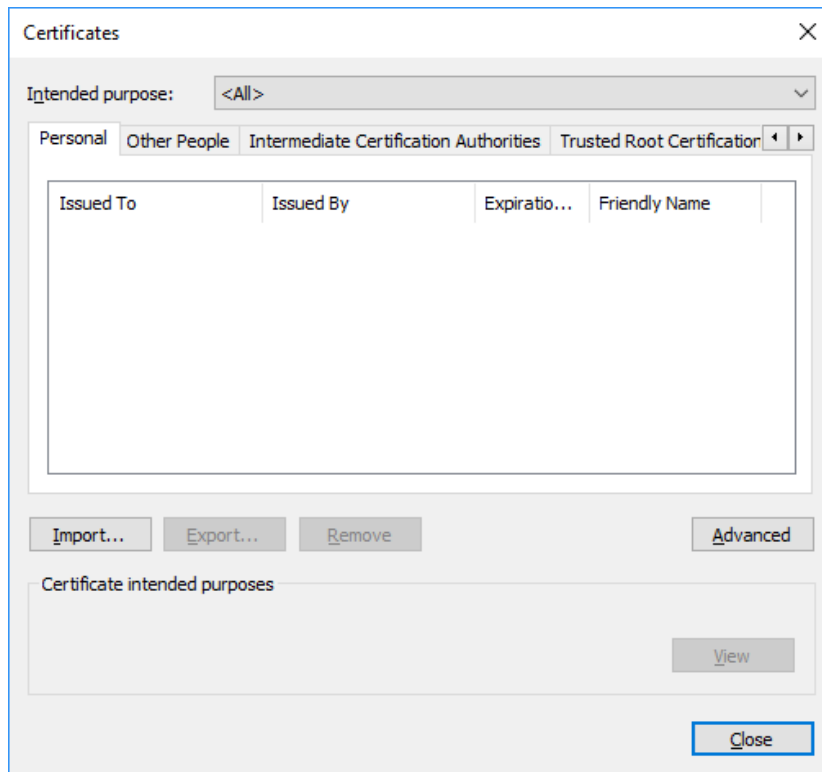
Click Yes to install the certificate



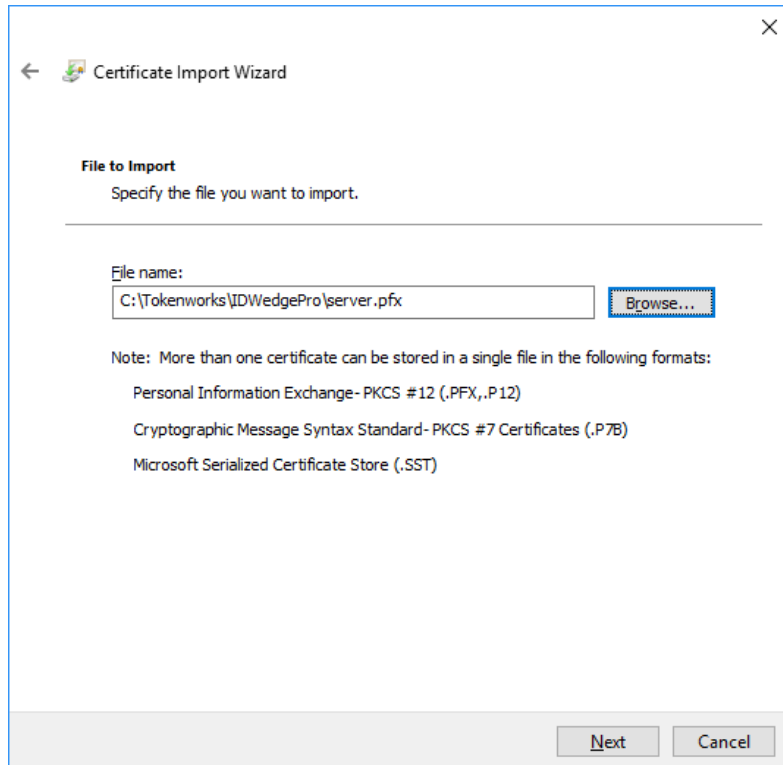
Verify there is a local host in the Trusted Root

### Install server.pfx into the personal store


Go to the Personal tab on the Certificate store, click import, locate the file server.pfx in the IDWedgePro directory, use the password: test



Click Import



Click Browse and locate the Server.pfx in C:\TokenWorks\IDWedgePro

 Certificate Import Wizard

**Private key protection**  
To maintain security, the private key was protected with a password.

Type the password for the private key.

Password:

test

☒ Display Password

Import options:

☐ Enable strong private key protection. You will be prompted every time the private key is used by an application if you enable this option.

☐ Mark this key as exportable. This will allow you to back up or transport your keys at a later time.

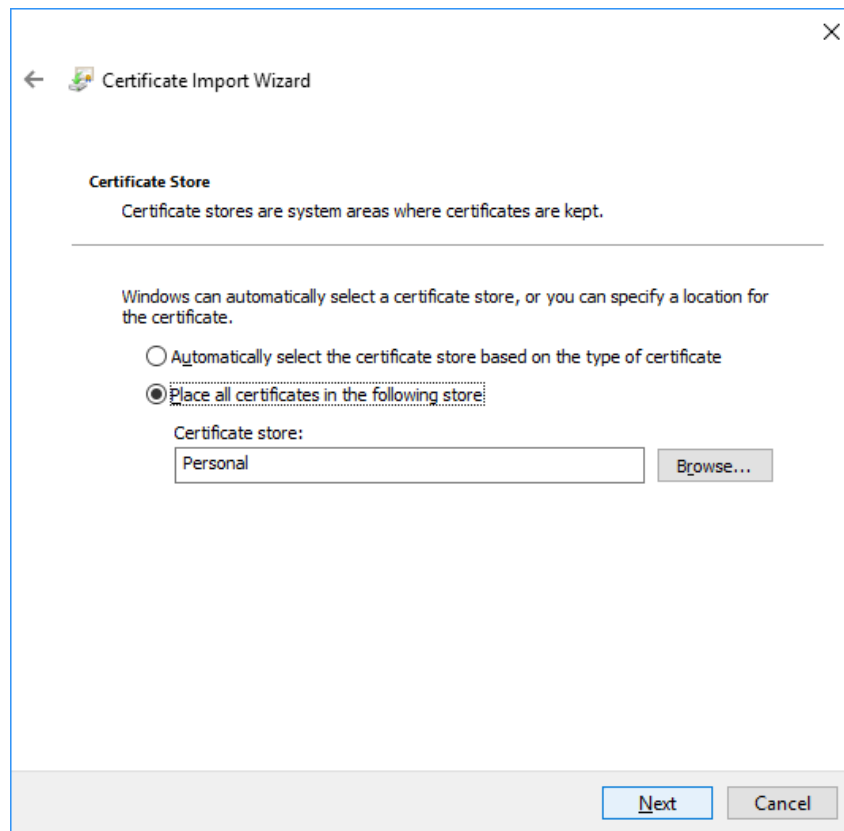
☐ Protect private key using virtualized-based security(Non-exportable)

☒ Include all extended properties.

Next

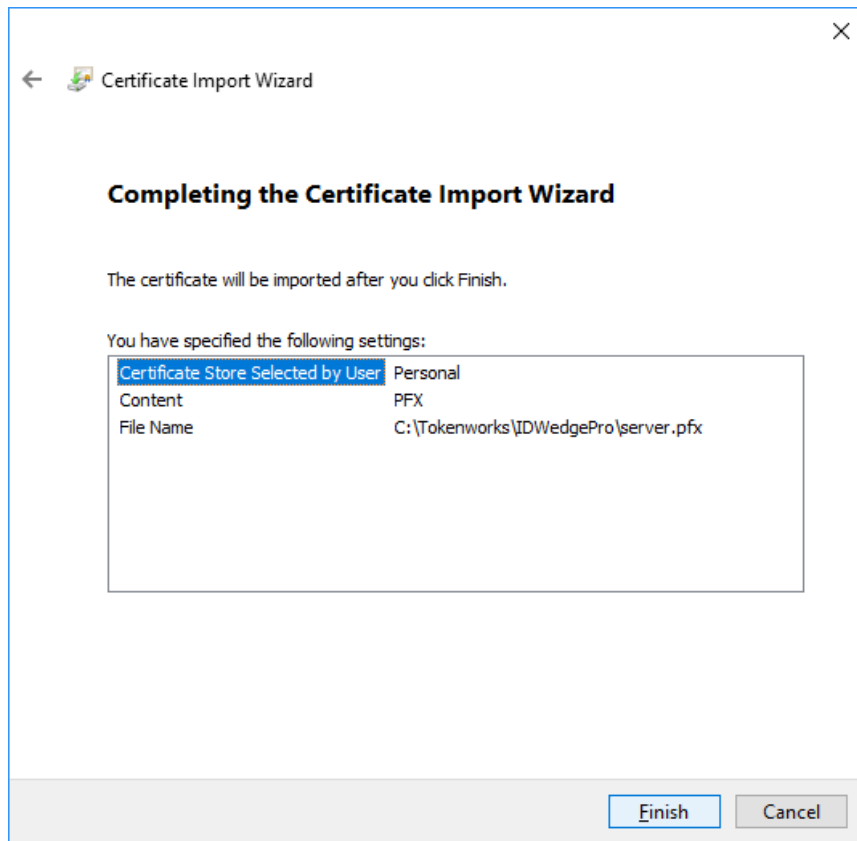
Cancel

Use password: test

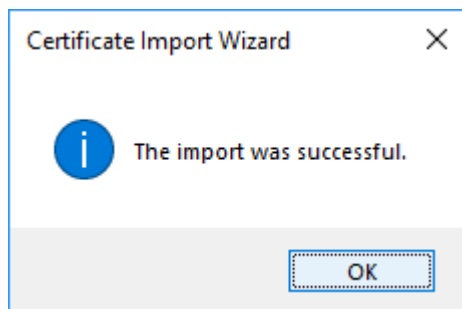


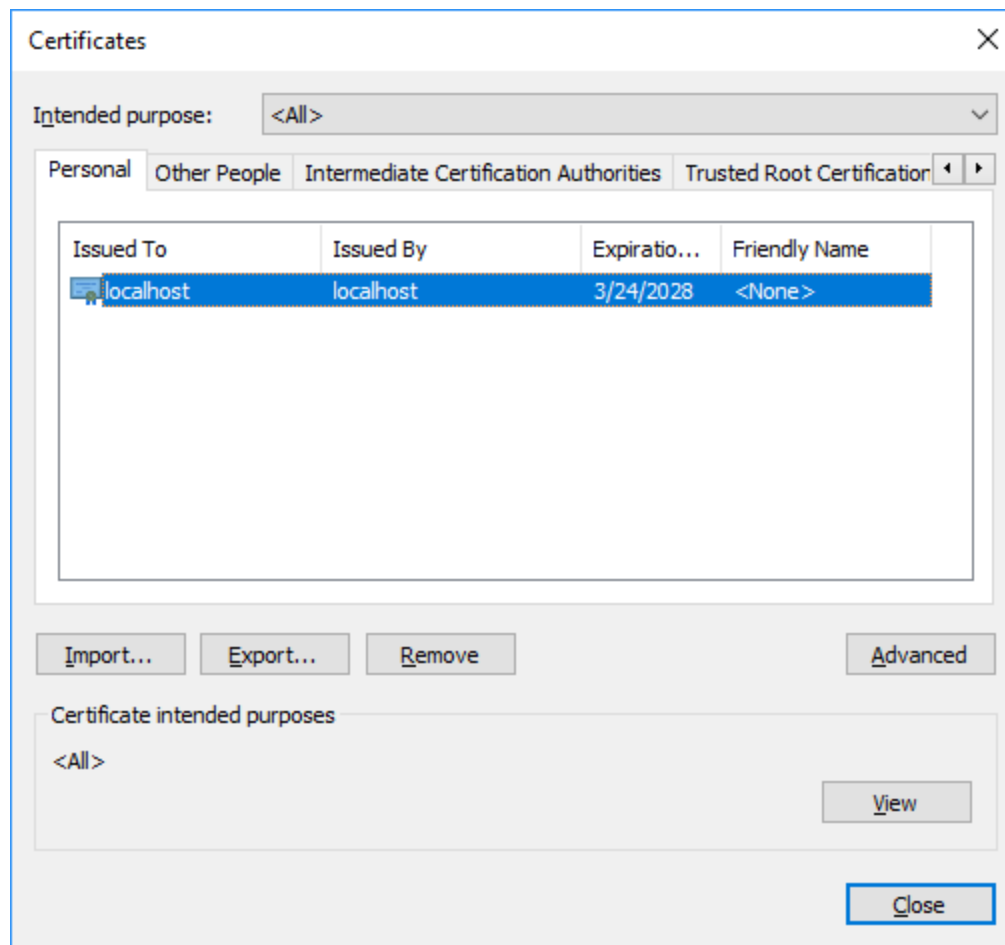
Click Next to install into Personal Store





Click Finish





Verify a 2<sup>nd</sup> local host in the personal store

End of document